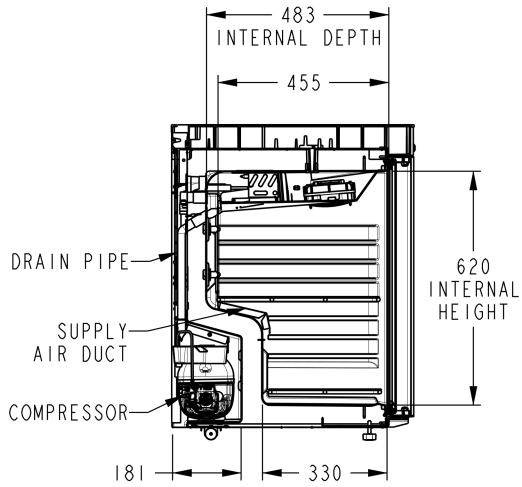
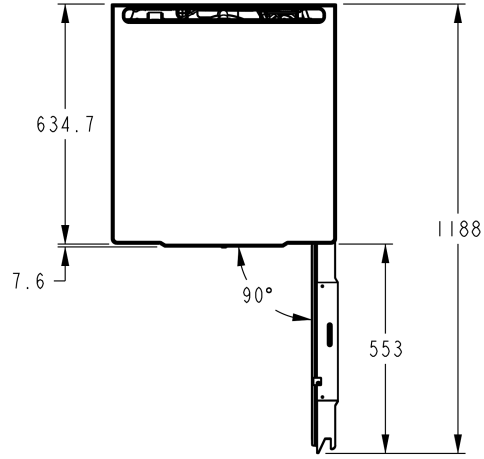
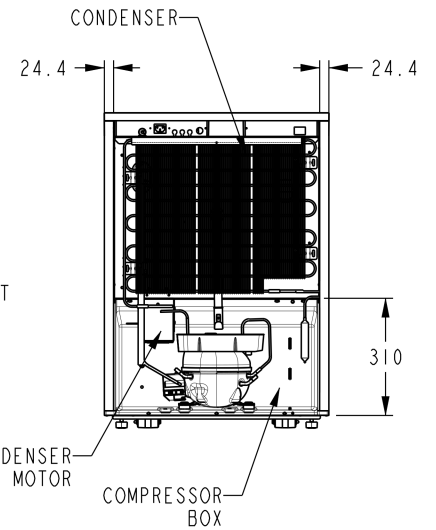
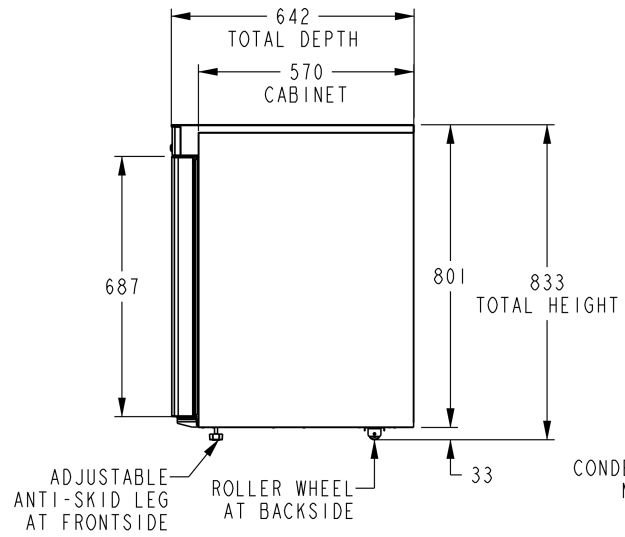
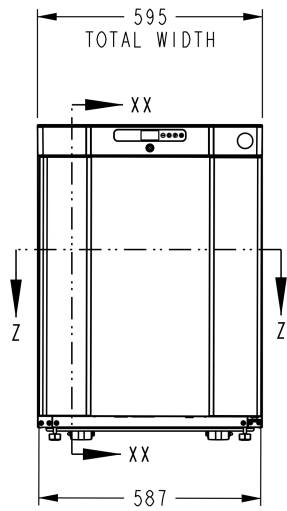


WITHOUT DOOR
SECTION Z-Z
SCALE 0.050



SECTION XX-XX



ITEM	UPRIGHT SOLID DOOR CHILLER	UPRIGHT SOLID DOOR FREEZER
MODEL NAME	COMPACT K220	COMPACT F220
POWER SUPPLY	SINGLE PHASE, 220-240V AC, 50HZ	SINGLE PHASE, 220-240V AC, 50HZ
POWER CORD	3M / AMPERAGE AS PER COUNTRY SPECIFICATION	3M / AMPERAGE AS PER COUNTRY SPECIFICATION
OUTSIDE DIMENSIONS (mm)	595(W)X642(D)X833(H-WITH ROLLER)	595(W)X642(D)X833(H-WITH ROLLER)
INSIDE DIMENSIONS (mm)	490(W)X483(D)X620(H)	490(W)X483(D)X620(H)
EXTERIOR MATERIAL	PRE-COATED SHEET / STAINLESS STEEL SS430	PRE-COATED SHEET / STAINLESS STEEL SS430
INTERIOR MATERIAL	HIPS	HIPS
INSULATION	POLYURETHANE FOAM (CFC FREE)	POLYURETHANE FOAM (CFC FREE)
INSULATION FOAM BLOWING AGENT	CYCLOPENTANE	CYCLOPENTANE
REFRIGERATION SYSTEM	FORCED COOLING	FORCED COOLING
COMPRESSOR	EMBRACO	EMBRACO
CONDENSER	WIRE ON TUBE TYPE	WIRE ON TUBE TYPE
EVAPORATOR	COPPER TUBE	COPPER TUBE
REFRIGERANT	R600a	R600a
OPERATING CONDITIONS	CLIMATIC CLASS4 : +30°C / 55% RH	CLIMATIC CLASS4 : +30°C / 55% RH
TEMPERATURE RANGE	+1°C TO +12°C	-25°C TO -5°C
CASTOR / LEGS / QUANTITY	2NOS OF ROLLER WHEELS AND 2NOS OF ANTI-SKID LEGS	2NOS OF ROLLER WHEELS AND 2NOS OF ANTI-SKID LEGS
SHELF	1 NO BIG SHELF + 1 NO SMALL SHELF	1 NO BIG SHELF + 1 NO SMALL SHELF